

Bourdon tube test gauge

All stainless-steel construction



Features:

- All SS Case
- High resolution dial
- High precision measuring system
- Anti-parallax mirror band
- Socket directly welded to case
- Calibration certificate

Applications:

- Calibration / testing in laboratory
- Fits for various process industries and all gaseous / liquid media that will not obstruct the pressure system.

Standard:

- EN 837-1

Standard Parameters

Accuracy	: ±0.25% of F. S. (At +20 °C)
Ambient temperature	: Maximum +65°C
Process temperature	: Maximum +65°C
Operating Pressure Range	: 75% of the scale value

Materials of Construction

Case & bezel	: AISI 304 SS (Bayonet Type)
Bourdon	: Beryllium Copper
Socket	: AISI 316L SS
Movement	: High Precision jewel bearing type
Integral Dampening screw	: AISI 316 SS
Protection	: IP 65
Dial	: Aluminium, Green with Black Marking & Anti Parallax Mirror Band
Pointer	: Balanced, Knife Edge Micrometer Adjustable
Pointer stopper	: Spring type
Gasket	: Neoprene
Welding	: Alloy Brazing
Window	: Shatter proof / Safety Glass
Blow off disc	: Neoprene

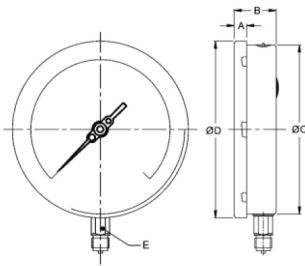
Temperature Effect

The variation of indication caused by effects of temperature is to be calculated by below formula which is to be added in the specific accuracy while measurement:

Formula $\pm 0.04 \times (t_2 - t_1) \% \text{ of F.S.}$

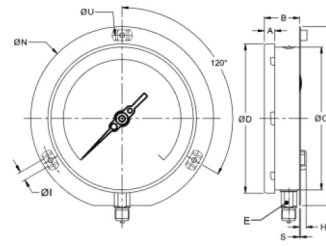
where t1: reference temperature (+20°C) and t2: ambient temperature in °C.

Dimensional drawing

TYPE 1


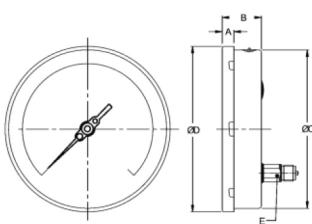
NS	A	B	ØC	ØD	E	W
150	15	49	149	161	22	1100
200	18	49	201.5	216.5	22	1975
250	18	52	250	263	22	2375

W = Weight in grams with box

TYPE 2


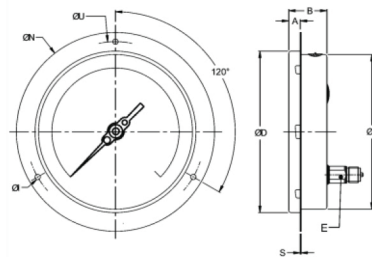
NS	A	B	ØC	ØD	E	M	ØN	ØU	H	ØI	S	W
150	15	46.5	149	161	22	174	186	168	14.5	6	6	1160
200	18	49	201.5	216.5	22	229	245	230	14.5	7	1.5	2050
250	18	52	250	263	22	286.5	290	276	14.5	7	1.5	2450

W = Weight in grams with box

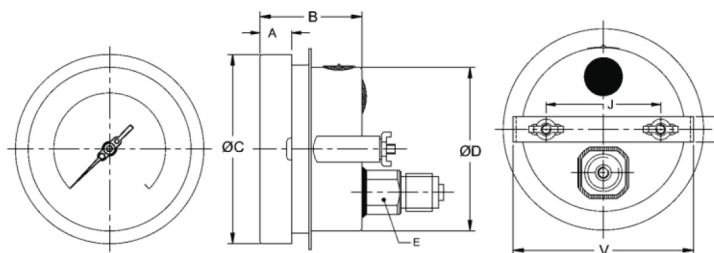
TYPE 3


NS	A	B	ØC	ØD	E	W
150	15	49	149	161	22	1075
200	18	49	201.5	216.5	22	1950
250	18	52	250	263	22	2350

W = Weight in grams with box

TYPE 5


NS	A	B	ØC	ØD	E	ØN	ØU	ØI	S	H	W
150	15	49	149	161	22	186	168	6	5	1160	
200	18	49	201.5	216.5	22	245	230	7	1.5	2030	
250	18	52	250	263	22	290	276	7	1.5	2480	

TYPE 8


NS	A	B	ØC	ØD	E	J	K	V	W
150	15	49	149	161	22	106.5	16	166	1120
200	18	49	201.5	216.5	22	165	16	208	1950
250	18	52	250	263	22	180	30	270	2300

W = Weight in grams with box

Note: ● Drawings are not to scale ● All dimensions are in mm

Range table

Note: We offer National & International ranges in Scales like kPa, MPa, bar, psi, kg/cm² & dual Scale like kPa with psi, kPa with bar, bar with psi or scales as per the requirement can be provided on request. Following are the example tables for kg/cm² or bar.

Pressure Table

Single scale with Kg/cm² or bar

0/0.6	0/2.5	0/10	0/40	0/160	0/600
0/1	0/4	0/16	0/60	0/250	0/1000
0/1.6	0/6	0/25	0/100	0/400	

Dual scale (psi with Kg/cm²)

psi	kg/cm ²	psi	kg/cm ²	psi	kg/cm ²
0/15	0/1	0/400	0/28	0/4000	0/280
0/30	0/2	0/500	0/35	0/5000	0/350
0/60	0/4	0/600	0/40	0/6000	0/420
0/100	0/7	0/1000	0/70	0/10000	0/700
0/150	0/10	0/1500	0/100	0/15000	0/1000
0/220	0/16	0/2200	0/160		
0/300	0/20	0/3000	0/200		

Vacuum range with single scale

Kg/cm ² or bar	mmHg	Accessories	
-1/0	-760/0	Overload protector	Needle valve

Ordering codes

1. Dial Size		G	3. Gauge Connection		15B
Code	Nominal size		15B	1/2" BSP[M] standard	
G	150mm		06N	1/4" NPT[M]	
H	200mm		15N	1/2" NPT[M] standard	
I	250mm				
2. Mounting		1	4. Range		0/10 Kg/cm²
1	Direct bottom		Refer range table		
2	Bottom surface		5. Options		
3	Direct lower back entry		ST	SS tag plate	
5	Flush back panel with front flange		DT	Dial tag marking	
8	Back entry with mounting bracket		CD	Custom designed dial	

Ordering Example: MG-G-1-15B-0-10Kg/cm²-ST

Note: Specifications and dimensions given in this product catalogue represents the state of engineering at the time of printing. Modifications may take place and materials specified may be replaced by others without prior notice.

Note: ● Drawings are not to scale ● All dimensions are in mm