

Diaphragm seal Direct coupled type



Features:

- Robust two-piece design
- Diaphragm is welded to the body to ensure separation of the filling fluid from the process medium.
- All SS construction

Applications:

- Diaphragm seals are designed to isolate the sensing element of pressure gauges and pressure switches from process fluids that they may be corrosive, viscous, sedimentous and / or with a high temperature.

Standard Parameters

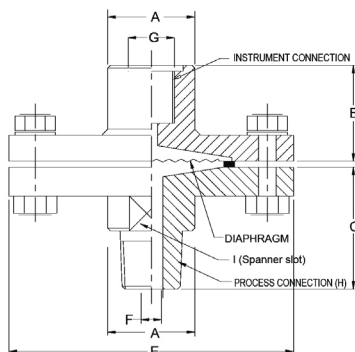
Seal type & Range	: T06 = -1 to 0 kg/cm ² & 0 to 70 kg/cm ² : T07 = 100 kg/cm ² to 400 kg/cm ²
Process temperature	: - 40 °C to 200 °C or as per fill fluid
Instrument connection	: 1/2" BSP[F]
Process connection	: 1/2" BSP[M]
Fill fluid	: Silicon Oil - DC 200
Mounting	: Direct (without capillary)

Materials of Construction

Diaphragm	: AISI 316L SS
Top chamber	: AISI 304 SS
Bottom chamber	: AISI 316 SS
Nuts / bolts	: AISI 304 SS
Sealing gasket	: PTFE

Dimensional drawing

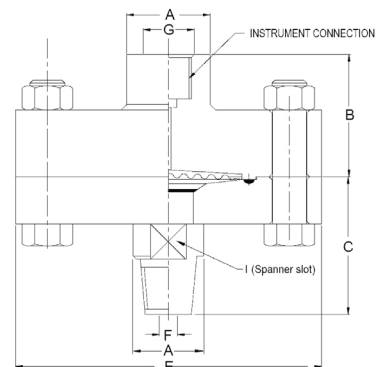
Type T06 (Standard version)



A	~B	~C	E	F	G	H	I	Wt.
30	26	47	98	Ø8	1/2" BSP[F]	1/2" BSP[M]	25	1500

Wt. = Approx. weight in grams

Type T07



A	~B	~C	E	F	G	H	I	Wt.
30	44	49.5	110	Ø8	1/2" BSP[F]	1/2" BSP[M]	25	3000

Wt. = Approx. weight in grams

Note: ● Drawings are not to scale ● All dimensions are in mm

