

## Capsule type pressure gauge

### All stainless-steel construction



#### Features:

- All SS Case
- All SS Measuring System
- Compact design
- CE Marking

#### Applications:

- Low pressure draft measurement
- Food & beverages,
- Pharmaceutical
- Breweries
- Conventional & nuclear power plants
- Clean air
- Gaseous
- Cryogenics
- Low viscous liquid & non corrosive media that will not obstruct the pressure system.

#### Standard:

- EN 837-3

#### Standard Parameters

Accuracy	: ±1.6% of F. S.
Ambient temperature	: -25 to +65°C
Process temperature	: 150°C max.
Operating Pressure Range	: 75% of the scale value
Over Pressure Limit	: 130% of Max. Scale Value

#### Materials of Construction

Case & bezel	: AISI 304 SS (Bayonet Type)
Capsule	: AISI 316 SS
Socket	: AISI 316 SS (Directly welded to the case)
Movement	: AISI 304 SS
Joints	: Tig Argon Arc Welding
Protection	: IP 65
Dial	: Aluminium, black graduation on white background
Pointer	: Aluminium, black coloured, slotted zero adjustable
Window	: Sheet glass
Vent plug	: Neoprene
Gasket	: Neoprene

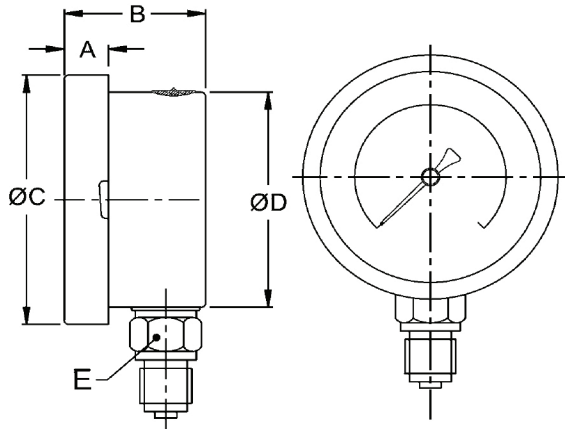
#### Temperature Effect

The variation of indication caused by effects of temperature is to be calculated by below formula which is to be added in the specific accuracy while measurement:

Formula  $\pm 0.06 \times (t_2 - t_1) \% \text{ of F.S.}$

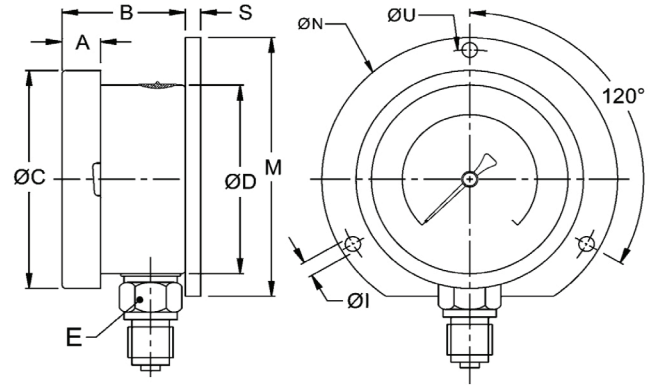
where t1: reference temperature (+20°C) and t2: ambient temperature in °C.

## Dimensional drawing – 63mm

**TYPE 1**


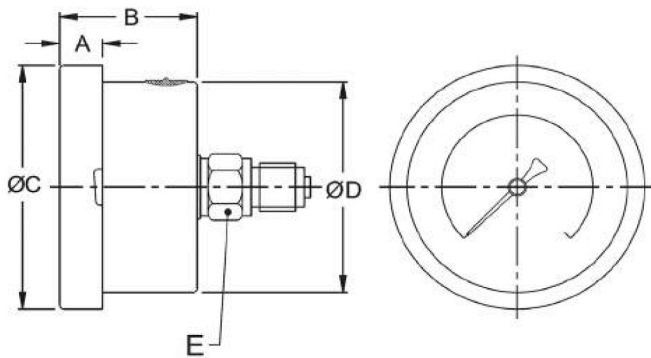
NS	A	B	ØC	ØD	E	W
63	12.5	46	77.5	66.5	A/F 14	270

W = Weight in grams with box

**TYPE 2**


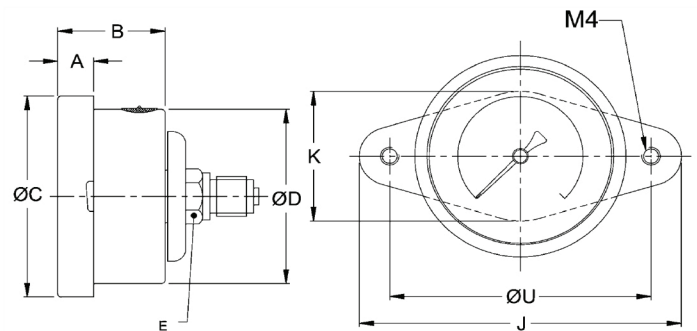
NS	A	B	ØC	ØD	E	S	ØN	ØI	ØU	M	W
63	12.5	46	77.5	66.5	A/F 14	7	86	3.6	75	80	300

= Weight in grams with box

**TYPE 4**


NS	A	B	ØC	ØD	E	W
63	12.5	46	77.5	66.5	A/F 14	260

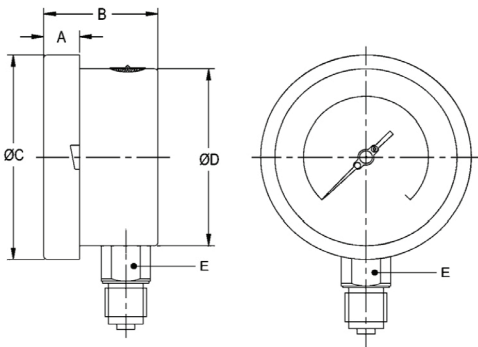
W = Weight in grams with box

**TYPE 10**


NS	A	B	ØC	ØD	E	J	K	ØU	W
63	12.5	46	77.5	66.5	A/F 14	91	38	70.5	260

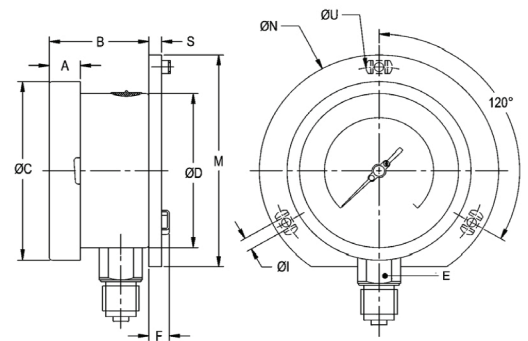
W = Weight in grams with box

Note: ● Drawings are not to scale ● All dimensions are in mm

**Dimensional drawing 100-150mm**
**TYPE 1**


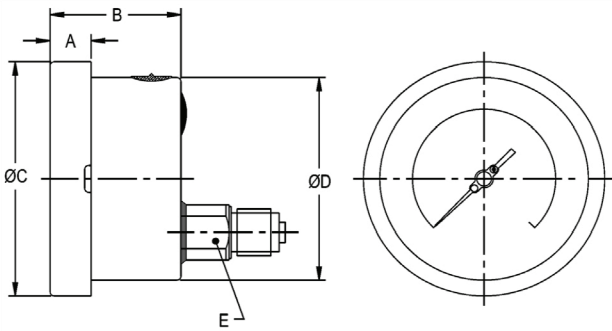
NS	A	B	ØC	ØD	E	W
100	12.5	47	111	100	22	605
125	15	48	129	119	22	670
150	15	49	161	149	22	1030

W = Weight in grams with box

**TYPE 2**


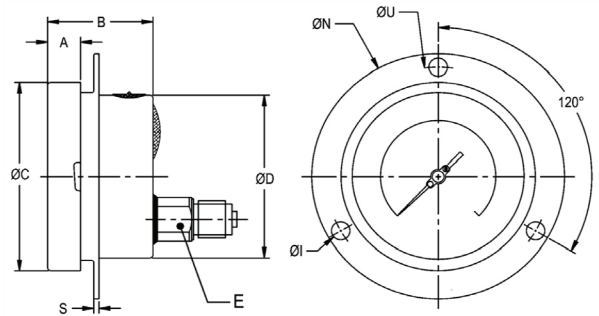
NS	A	B	ØC	ØD	E	M	S	F	ØI	ØN	ØU	W
100	12.5	45	111	100	22	128	6	14.5	6	134	118	690
125	15	46	129	119	22	143	4	15	6	152	138	760
150	15	46.5	161	149	22	174.5	5.5	15	6	186	168	1110

W = Weight in grams with box

**TYPE 3**


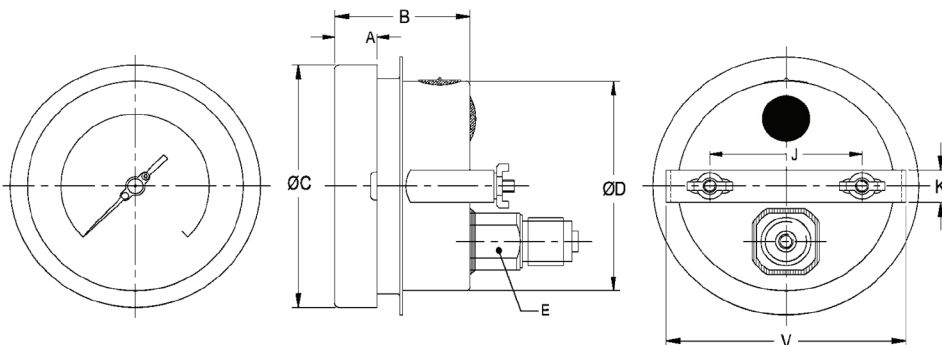
NS	A	B	ØC	ØD	E	W
100	12.5	47	111	100	22	640
125	15	48	129	119	22	750
150	15	49	161	149	22	1000

W = Weight in grams with box

**TYPE 5**


NS	A	B	ØC	ØD	E	S	ØI	ØN	ØU	W
100	12.5	47	111	100	22	1	6	134	118	695
125	15	48	129	119	22	4	6	150	137	850
150	15	49	161	149	22	5	6	186	168	1100

W = Weight in grams with box

**TYPE 8**


NS	A	B	ØC	ØD	E	J	K	V	W
100	12.5	47	111	100	22	72	16	108	740
125	15	48	129	119	22	75	16	125	890
150	15	49	161	149	22	106.5	16	166	1100

W = Weight in grams with box

Note: ● Drawings are not to scale ● All dimensions are in mm

## Range table

Note : We offer National / International Scales like mbar, kPa, inWC, MWC, inHg, mmHg & Dual Scale or Equivalent scales as per the requirement can be provided on request. Following are the example tables for mmWC scales.

### Pressure Range

Single scale with mmWC				
0/250	0/600	0/1600	0/2500	0/6000
0/400	0/1000	0/2000	0/4000	

### Vacuum Range

Single scale with mmWC				
-250/0	-600/0	-1600/0	-2500/0	-600/0
-400/0	-1000/0	-2000/0	-4000/0	

### Compound Range

Single scale with mmWC				
-100/150	-200/400	-600/1000	-1000/1500	-2000/4000
-150/250	-400/600	-800/1200	-1500/2500	

### Accessories

Gauge Cock	Siphon
------------	--------

## Ordering codes

1. Dial Size	E	4. Options	5C																																
<table border="1"> <thead> <tr> <th>Code</th> <th>Nominal size</th> </tr> </thead> <tbody> <tr> <td>C</td> <td>63mm</td> </tr> <tr> <td>E</td> <td>100mm</td> </tr> <tr> <td>F</td> <td>125mm</td> </tr> <tr> <td>G</td> <td>150mm</td> </tr> </tbody> </table>	Code	Nominal size	C	63mm	E	100mm	F	125mm	G	150mm	1	<table border="1"> <tbody> <tr> <td><b>S6</b></td> <td>AISI 316 SS case &amp; bezel◆</td> </tr> <tr> <td><b>5C</b></td> <td>Five-point calibration certificate</td> </tr> <tr> <td><b>PG</b></td> <td>Plexi glass</td> </tr> <tr> <td><b>SG</b></td> <td>Shatterproof/safety glass</td> </tr> <tr> <td><b>TG</b></td> <td>Toughened glass</td> </tr> <tr> <td><b>DS</b></td> <td>Dampening screw in AISI 316 SS</td> </tr> <tr> <td><b>ST</b></td> <td>SS tag plate</td> </tr> <tr> <td><b>DT</b></td> <td>Dial tag marking</td> </tr> <tr> <td><b>CD</b></td> <td>Custom designed dial</td> </tr> <tr> <td><b>MT</b></td> <td>Material test certificate#</td> </tr> <tr> <td><b>NT</b></td> <td>Calibration certificate with NABL traceability</td> </tr> </tbody> </table> <p>◆ Not applicable for NS 63mm # Material test certificate will be provided for wetted parts only. For others, pls contact factory.</p>	<b>S6</b>	AISI 316 SS case & bezel◆	<b>5C</b>	Five-point calibration certificate	<b>PG</b>	Plexi glass	<b>SG</b>	Shatterproof/safety glass	<b>TG</b>	Toughened glass	<b>DS</b>	Dampening screw in AISI 316 SS	<b>ST</b>	SS tag plate	<b>DT</b>	Dial tag marking	<b>CD</b>	Custom designed dial	<b>MT</b>	Material test certificate#	<b>NT</b>	Calibration certificate with NABL traceability	0-4000
Code	Nominal size																																		
C	63mm																																		
E	100mm																																		
F	125mm																																		
G	150mm																																		
<b>S6</b>	AISI 316 SS case & bezel◆																																		
<b>5C</b>	Five-point calibration certificate																																		
<b>PG</b>	Plexi glass																																		
<b>SG</b>	Shatterproof/safety glass																																		
<b>TG</b>	Toughened glass																																		
<b>DS</b>	Dampening screw in AISI 316 SS																																		
<b>ST</b>	SS tag plate																																		
<b>DT</b>	Dial tag marking																																		
<b>CD</b>	Custom designed dial																																		
<b>MT</b>	Material test certificate#																																		
<b>NT</b>	Calibration certificate with NABL traceability																																		
<h3>2. Mounting</h3> <table border="1"> <tbody> <tr> <td>1</td> <td>Direct bottom</td> </tr> <tr> <td>2</td> <td>Bottom surface</td> </tr> <tr> <td>3</td> <td>Direct lower back entry◆</td> </tr> <tr> <td>4</td> <td>Direct center back entry#</td> </tr> <tr> <td>5</td> <td>Flush back panel with front flange◆</td> </tr> <tr> <td>8</td> <td>Lower Back entry with mounting bracket◆</td> </tr> <tr> <td>10</td> <td>Centre Back entry with mounting bracket#</td> </tr> </tbody> </table> <p>◆Not applicable for NS 63mm #only applicable for NS 63mm</p>	1	Direct bottom	2	Bottom surface	3	Direct lower back entry◆	4	Direct center back entry#	5	Flush back panel with front flange◆	8	Lower Back entry with mounting bracket◆	10	Centre Back entry with mounting bracket#	10B	<h3>5. Range</h3> <p>Refer range table</p>																			
1	Direct bottom																																		
2	Bottom surface																																		
3	Direct lower back entry◆																																		
4	Direct center back entry#																																		
5	Flush back panel with front flange◆																																		
8	Lower Back entry with mounting bracket◆																																		
10	Centre Back entry with mounting bracket#																																		
<h3>3. Gauge Connection</h3> <table border="1"> <tbody> <tr> <td><b>06B</b></td> <td>1/4" BSP[M]#</td> </tr> <tr> <td><b>10B</b></td> <td>3/8" BSP[M]*</td> </tr> <tr> <td><b>15B</b></td> <td>1/2" BSP[M] *</td> </tr> <tr> <td><b>06N</b></td> <td>1/4" NPT[M]#</td> </tr> <tr> <td><b>10N</b></td> <td>3/8" NPT[M]*</td> </tr> <tr> <td><b>15N</b></td> <td>1/2" NPT[M]*</td> </tr> <tr> <td><b>M20</b></td> <td>M20 X 1.5[M]*</td> </tr> </tbody> </table> <p>#only applicable for NS 63mm *These connections will be provided through adaptors for NS 63 mm.</p>	<b>06B</b>	1/4" BSP[M]#	<b>10B</b>	3/8" BSP[M]*	<b>15B</b>	1/2" BSP[M] *	<b>06N</b>	1/4" NPT[M]#	<b>10N</b>	3/8" NPT[M]*	<b>15N</b>	1/2" NPT[M]*	<b>M20</b>	M20 X 1.5[M]*																					
<b>06B</b>	1/4" BSP[M]#																																		
<b>10B</b>	3/8" BSP[M]*																																		
<b>15B</b>	1/2" BSP[M] *																																		
<b>06N</b>	1/4" NPT[M]#																																		
<b>10N</b>	3/8" NPT[M]*																																		
<b>15N</b>	1/2" NPT[M]*																																		
<b>M20</b>	M20 X 1.5[M]*																																		

## Ordering Example: CS-E-1-10B-5C-0-4000mmWC

Note: Specifications and dimensions given in this product catalogue represents the state of engineering at the time of printing. Modifications may take place and materials specified may be replaced by others without prior notice.